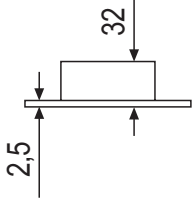




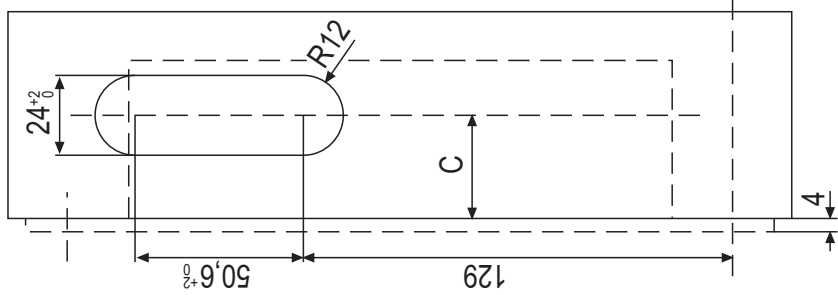
LC306, LC306H

PORAUSKAAVIO
BORRSKEMA

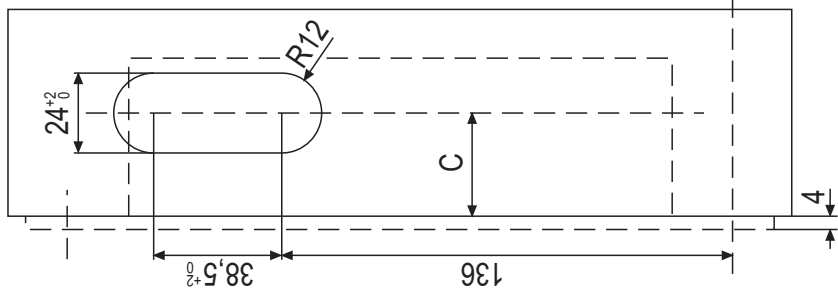
Olkaa hyvä ja verratkaa kaavion mittoja lukon mittoihin.
Var god, jämför mätten i borrshemat med själva låsets mått.



ULKOPUOLI
UTSIDA



SISÄPUOLI
INSIDA



ULKOPUOLI
UTSIDA



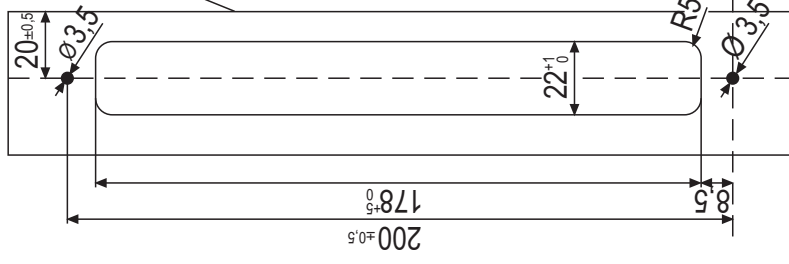
ME200

SISÄPUOLI
INSIDA

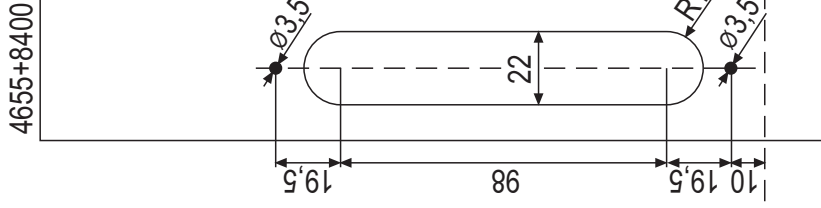
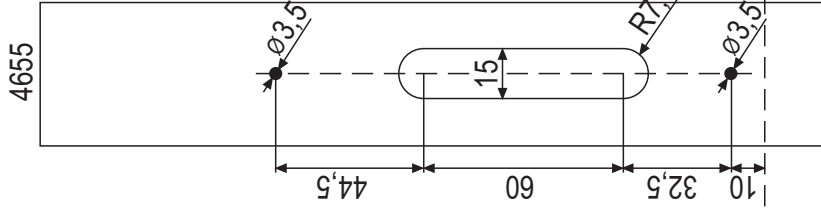


ME201
ME202
ME219

ETUPUOLI



KARMI
KARM



ME200: LC306 / 4655, (+8400) / CY064

ME201: LC306 / 4655, (+8400) / CY063

ME202: LC306 / 4655, (+8400) / CY065

ME219: LC306 / 4655, (+8400) / CY069 (käyttöluukko)

LC306, LC306H / 30,5 C=26,5
LC306, LC306H / 35 C=31

Toleranssit +0,5/-0