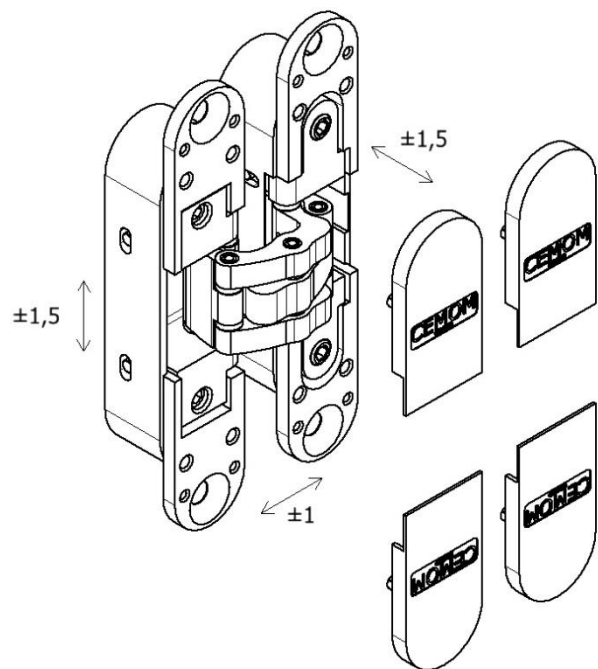
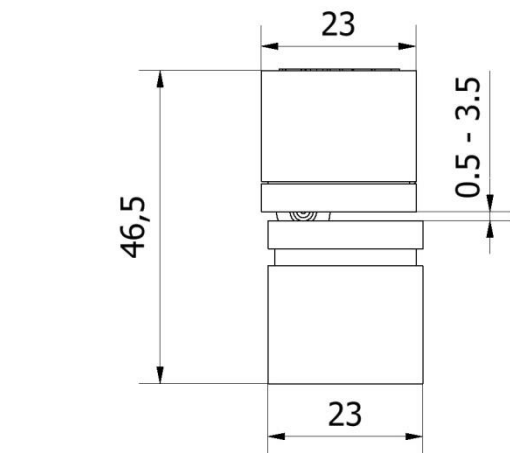




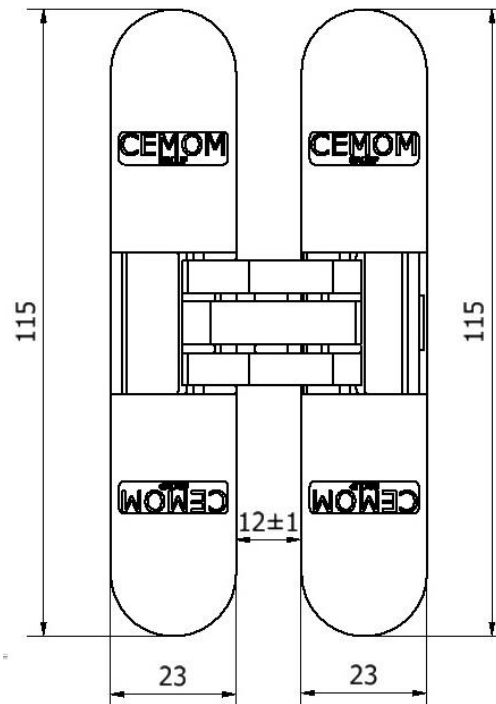
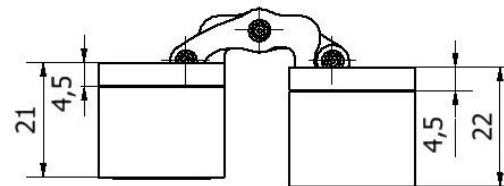
### Product features:

- completely concealed hinge,
- 3D adjustable (vertical  $\pm 1.5$  mm, horizontal  $\pm 1.5$  mm, depth  $\pm 1$  mm),
- slide bearings - do not require lubrication,
- right and left doors applicable,
- main dimensions: height 115 mm, width 23 mm, depth of frame part 21 mm, depth of door part 22 mm
- distance between bodies  $12 \pm 1$  mm

**Classification according EN 1935: 1 4 2 0 1 0 0 6**



**DOOR SIDE**                      **FRAME SIDE**



**ADJUSTMENT METHODS**

To make adjustments will be needed 3 mm Allen key. Adjustment is corrected when all hinges carrying the load.

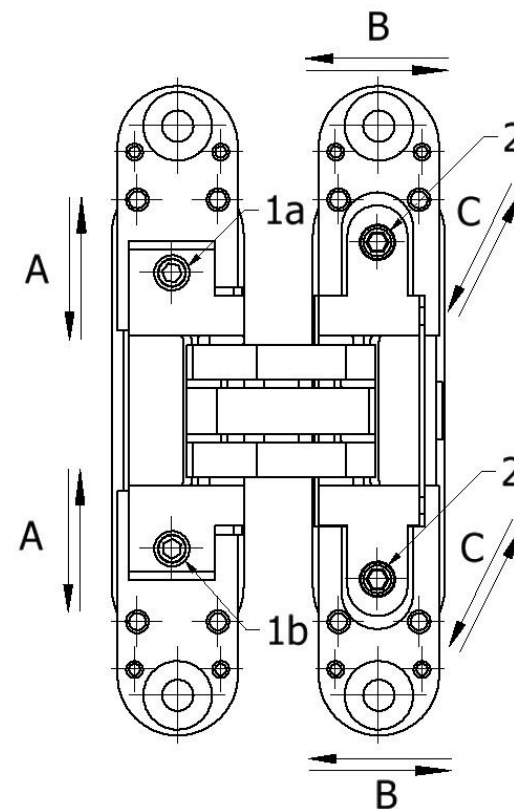
A – vertical adjustment – range  $\pm 1,5$  mm

First make sure that the top adjustment screw (1a) is on par with the front surface of the hinge - if not must unscrew it for this position. Adjust the hinge by turning bottom adjustment screw (1b). After finished adjustment tighten the top adjustment screw (1a).

B – depth adjustment – range  $\pm 1$  mm

C – horizontal adjustment – range  $\pm 1,5$  mm

Depth adjustment and horizontal adjustment takes place simultaneously. Adjust the hinge by turning alternately of both eccentric screws (2).



# ARRANGEMENT OF HINGES

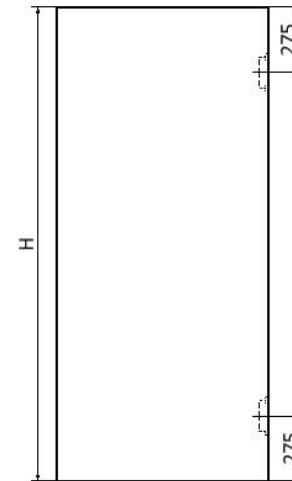
With correct adjustment (all hinges carrying the load), the suggested admissible weight of a door depending on the number of hinges and the door width, at the wing height of 2000 mm minimum has been presented in the table. The first door should always be checked.

Number of hinges	width DOOR "L"				
	600	700	800	900	1000
2	50 kg	46 kg	42 kg	40 kg	36 kg
3	56 kg	51 kg	48 kg	45 kg	40 kg
4	63 kg	57 kg	53 kg	50 kg	45 kg

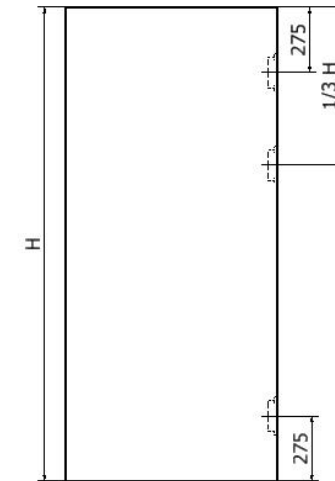
Position of the hinge in relation to the required dimensions of the door and the frame

Thickness of the door "G"	Width of the DOOR "L"				
	600	700	800	900	1000
	Minimum gap „B"				
29 mm	1,5mm	1,5mm	1,5mm	1,5mm	1,5mm
35 mm	1,5mm	1,5mm	1,5mm	1,5mm	1,5mm
40 mm	1,5mm	1,5mm	1,5mm	1,5mm	1,5mm

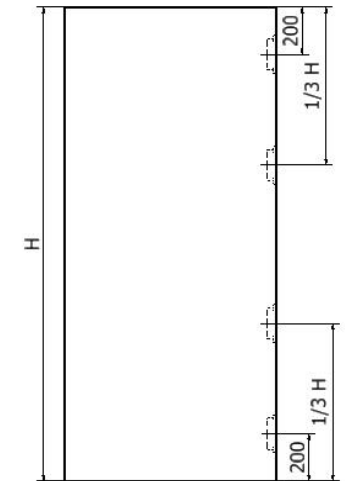
Two hinges



Three hinges

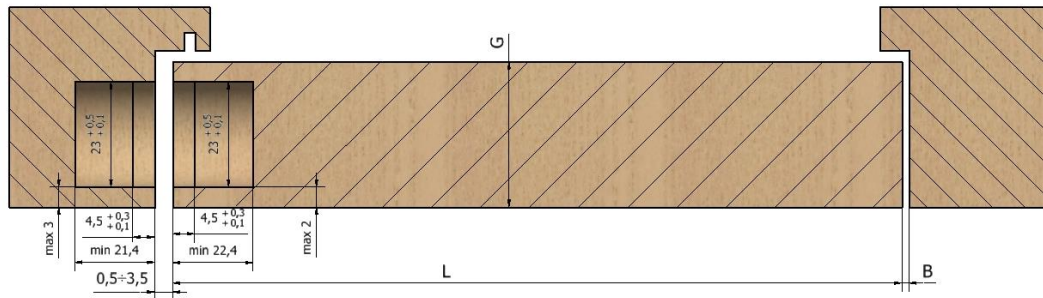


Four hinges

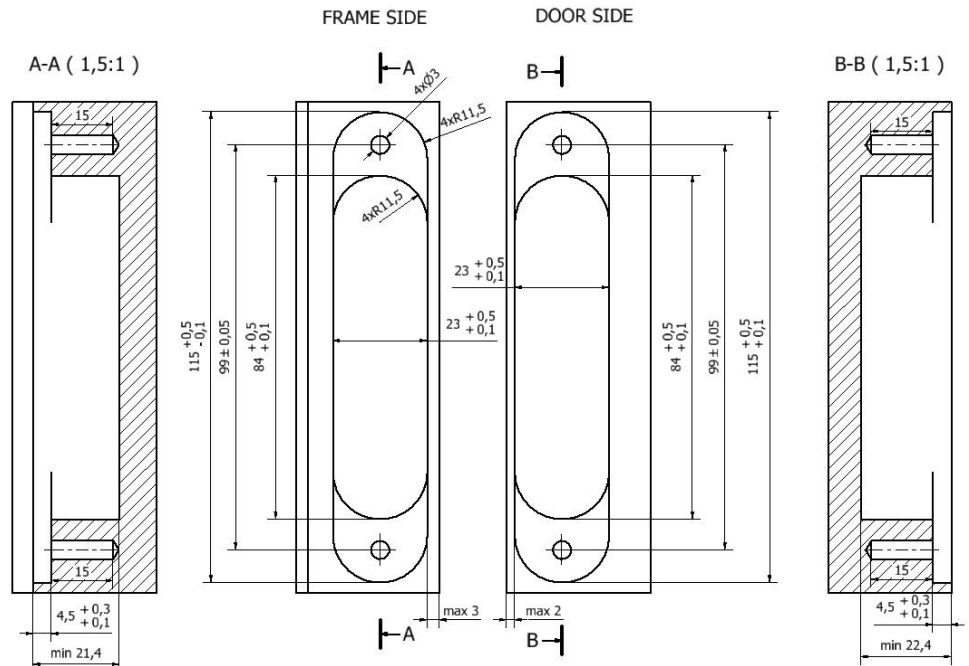


Hmin = 2000

# MILLING DIMENSIONS



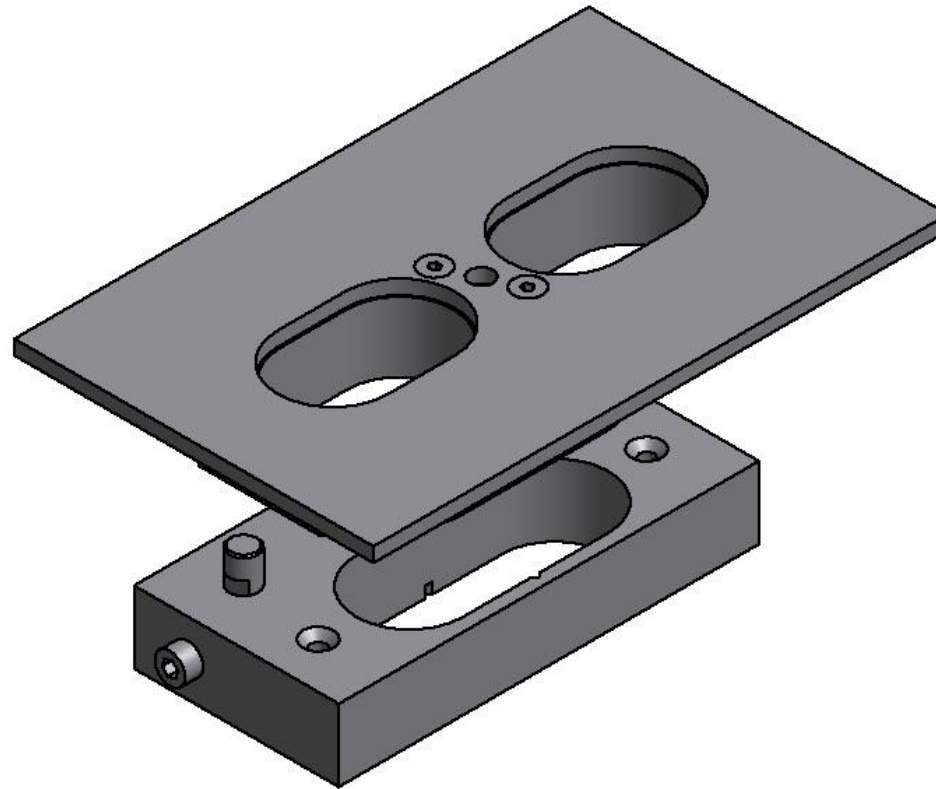
3/4



# Mounting accessories

jig for milling of slots without use of CNC machine

SE 40-00-00



4/4